



MobileAsset

Quick Start Guide

© Copyright Wasp Barcode Technologies 2010

No part of this publication may be reproduced or transmitted in any form or by any means without the written permission of Wasp Barcode Technologies. The information contained in this document is subject to change without notice.

Wasp and the Wasp logo are registered trademarks of Wasp Barcode Technologies. All other trademarks or registered trademarks are the property of their respective owners.

CONGRATULATIONS

Congratulations on your purchase of MobileAsset! This guide will take you through the installation process and help you set up your software. Most of the information available here is also available in the Getting Started section of the online help.

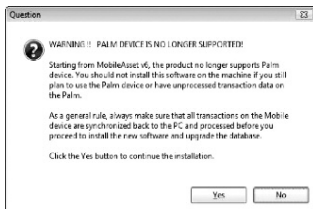
INSTALL THE SOFTWARE	1
Migrating an Existing Database	12
SET UP YOUR DATABASE	16
Methods of Data Entry	19
MobileAsset Web Module Setup	21
PRINT ASSET TAGS	24
AUDIT YOUR ASSETS	24
BEGIN USING THE APPLICATION	25
PROFESSIONAL EDITION INSTALL	25
CONNECTING A MOBILE DEVICE	29
ENTERPRISE EDITION INSTALL	30
UPGRADING FROM ENTERPRISE V5 ...	33
MANAGE MULTIPLE COMPANIES	34

STEP 1

INSTALL THE SOFTWARE

Note: If you are migrating an existing database, please refer to the section titled **Migrating an Existing Database** on page 12 prior to beginning the installation.

1 Insert the installation disk into your computer. The CD should automatically run the MobileAsset installer. If the installer does not run, you can manually start it by navigating to the CD on your computer and selecting setup.exe. The following warning screen appears:

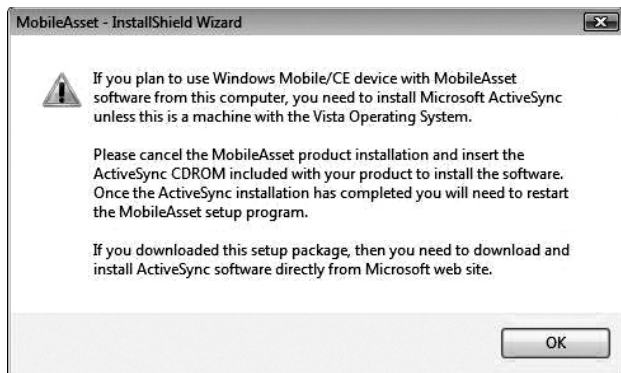


Please note that Palm devices are no longer supported by MobileAsset. Do not install this software on your machine if you are still using a Palm device or if you have unprocessed transaction data on a Palm device. If you are transitioning away from Palm devices, prior to upgrading your software, make sure each of the following tasks are performed:

- a. Sync all Palm devices with MobileAsset
- b. Process all transactions from the devices
- c. Set the Palm devices aside where they cannot be accidentally used

Click the **Yes** button to continue or **No** to cancel the installation.

2 The following screen appears, notifying you that you need to install ActiveSync if you will be installing a Windows Mobile/CE device:



If you are using a computer running Windows Vista or Windows 7, you will not need to install ActiveSync.

If you are installing a Windows Mobile/CE device:

- a. Leave the MobileAsset install screen as it is, and insert the ActiveSync CDROM (included in your MobileAsset package). Follow the prompts on the ActiveSync installation screens. You should install the files to the default directory.

Note: At the end of the Windows Mobile/CE device installation, you may be prompted to reboot your computer. Select **NOT** to reboot at this time (you will be given the opportunity to reboot after the entire MobileAsset installation is complete).

- b. After the ActiveSync installation is complete, replace the ActiveSync CD with the MobileAsset CD, return to the MobileAsset installer, and click the **OK** button on the ActiveSync warning screen.

3 Next, the installation wizard **Welcome** screen appears:



Click **Next** on this screen to begin installing MobileAsset.

4 Next the **License Agreement** screen appears.

Wasp Bar Code Technologies

SOFTWARE LICENSE AGREEMENT

READ THE TERMS AND CONDITIONS OF THIS LICENSE AGREEMENT CAREFULLY BEFORE INSTALLING THE SOFTWARE OR USING THE ASSOCIATED MEDIA, PRINTED MATERIALS, AND "ON-LINE" OR ELECTRONIC DOCUMENTATION (COLLECTIVELY, "USER DOCUMENTATION"). THE SOFTWARE AND USER DOCUMENTATION (COLLECTIVELY, THE "SOFTWARE PRODUCT") IS COPYRIGHTED AND LICENSED (NOT SOLD). BY INSTALLING THE SOFTWARE PRODUCT, YOU ARE ACCEPTING AND AGREEING TO THE TERMS OF THIS LICENSE AGREEMENT. IF YOU ARE NOT WILLING TO BE BOUND BY THE TERMS OF THIS LICENSE AGREEMENT, YOU SHOULD PROMPTLY RETURN THE SOFTWARE PRODUCT TO THE PLACE OF PURCHASE WITHIN THIRTY (30) DAYS OF PURCHASE OF THE SOFTWARE PRODUCT AND YOU WILL RECEIVE A REFUND OF YOUR MONEY. THIS LICENSE AGREEMENT REPRESENTS THE ENTIRE AGREEMENT CONCERNING THE SOFTWARE PRODUCT BETWEEN YOU AND WASP BAR CODE TECHNOLOGIES (REFERRED TO AS "LICENSOR"), AND IT SUPERSEDES ANY PRIOR PROPOSAL, REPRESENTATION, OR UNDERSTANDING BETWEEN THE PARTIES.

1. License Grant. Licensor hereby grants to you, and you accept, a nonexclusive license to

I accept the terms of the license agreement

I do not accept the terms of the license agreement

Print

Review the license agreement, then select **I accept the terms of the license agreement**. You will not be able to continue installing the application until you select this option.

5 The **User Registration** screen appears.

Please enter your name, the name of the company for which you work and the product serial number.

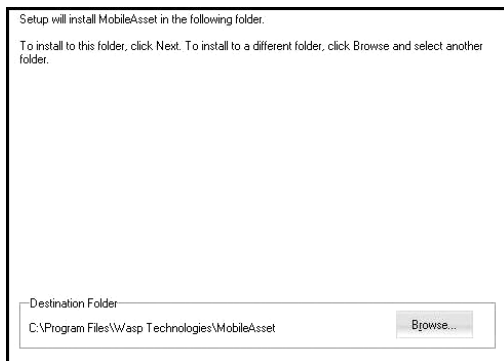
User Name:

Company Name:

Serial Number:

Enter your **User Name** (this can be any name of your choice), your **Company Name** and the **Serial Number**. The serial number can be found on or in the DVD case containing your MobileAsset software (19-digit number).

- 6 Next, a screen displays listing the **Destination Folder** for installation of MobileAsset: (C:\Program Files\Wasp Technologies\MobileAsset).



You can select a new destination by clicking the **Browse** button and navigating to a new folder, or accept the default location (recommended) by clicking the **Next** button.

- 7 If you are installing the Professional version, the **Select Installation Type** screen appears:



If you have already installed the database on another computer, deselect the **Database** checkbox on this screen (you only need to install the **Client Tools** to enable the software to talk to the database).

The **Database Manager** checkbox should be selected if:

- You are installing the Enterprise version and you will be maintaining assets for multiple companies from this machine, or
- You are installing the Professional or Enterprise version and you will be backing up, restoring or maintaining the database from this machine.

For information regarding the Database Manager feature please, refer to the section **Using MobileAsset to Manage Assets for Multiple Companies** on page 34.

If you are installing the Enterprise version, the Select Installation Type screen will also display the choice to install Microsoft SQL Server 2005 when the Wasp Database is installed:

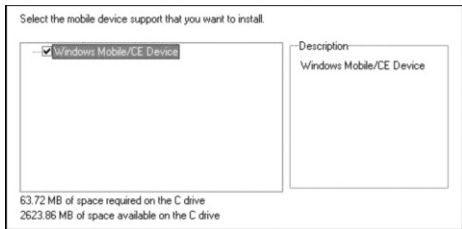


Note: Do not select this option if you have the full edition of SQL Server installed and intend to install the Wasp Database in that location.

The Web Module checkbox should be selected if you want to install the MobileAsset web module. If you select this option, the following screen will display when you click the **Next** button.



- 8** Next a screen appears asking which type of mobile device you are installing.



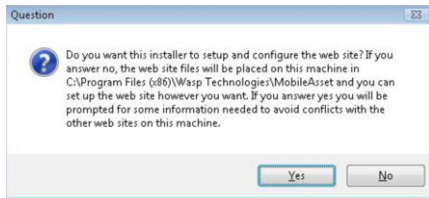
If you are going to use the software with a Windows Mobile/CE device, select the checkbox. If you will not be using a mobile device, leave the checkbox blank. Click the **Next** button to continue.

- 9** **Web Module Installs Only. All others skip to Step 10.**

If you have selected to install the **Web Module** you will see the following message:

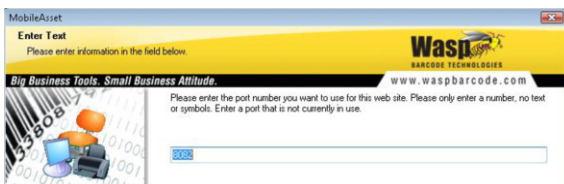


If MobileAsset will be the only website on the server, click **Yes**. The **Web Module** will install with the default settings. If there are other websites on the server, click **No**. You will need to provide additional information to avoid MobileAsset conflicting with your other websites. The following screen appears when you click **No**:



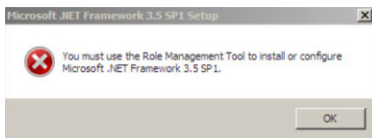
If you do not want the MobileAsset installer to configure the MobileAsset website for you, click **No**. All website files will be placed on the installation computer in C:\Program Files (86x)Wasp Technologies\MobileAsset. You will need to access these files and configure the website.

If you want the MobileAsset installer to automatically configure the MobileAsset website to avoid conflicts with other websites on your server, click **Yes**. The following screen appears prompting for additional information:



Enter the port number you want to use for the MobileAsset website. Do not enter any text or special characters. Make sure the port you enter is not in use by another application. The default port is 8082. Click **Next** to continue.

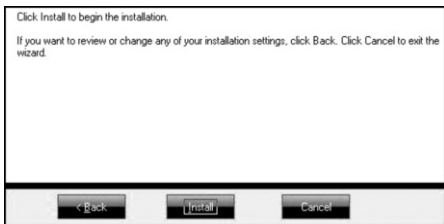
Note for Windows Server 2008 R2 users: If you are installing the Web Module, you may see a message similar to the following during the installation:



If you see this message you will need to update the .Net Framework. To do this, use the **Role Management Tool** to update or upgrade the .Net Framework. Once the upgrade is done, rerun the MobileAsset installation.

10 After your mobile devices are successfully installed, the MobileAsset installation will continue. If you want to make changes to your destination folder at this point, click the **Back** button. If you are ready to install

MobileAsset, click the Install button.



A series of progress screens will appear. The installation process may take a few minutes.

11 Database Installation

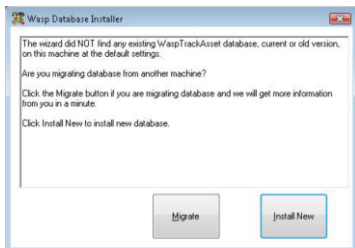
- a. During the install, the screen shown to the right will appear: This wizard takes you through the process of installing your new database. Click **Next** on this screen to continue installing.



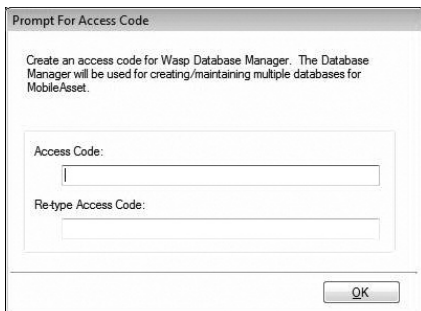
- b. Next, a progress message appears notifying you that the software is testing the connection.

You do not need to do anything at this point.

- c. If the **Database Installer** does not detect an existing database, the following screen appears:



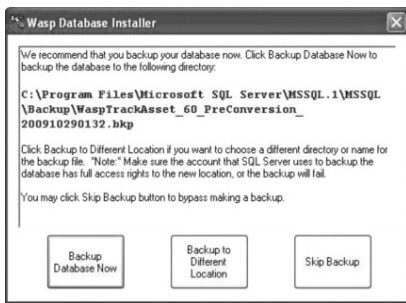
- d. If you are installing a new database, click the **Install New** button. If you are migrating a database, click the **Migrate** button. Please see the section “**Migrating an Existing Database**” on page 12.
- e. If you are installing the Professional or Enterprise version, a screen appears asking you to create an access code for the Database Manager. This access code serves as your password to open the Database Manager after install. It is very important that you make a note of this password.



Enter the Access Code of your choice, then click the **OK** button.

- f. If you are upgrading from version 5, the Database Installer will detect your existing database, upgrade it (leaving your existing data intact) and create a backup both before and after the upgrade.

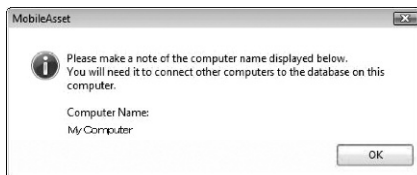
If you are installing or migrating a database, after the database is installed, a message appears asking if you want to backup the database now:



Click **Backup Database Now** to accept the default backup location, or click **Backup to Different Location** to select a custom directory or name for your backup file. If you want to create the backup later, click **Skip Backup**.

- g. Click **Finish** on the Database Installer screen to continue.
- h. The Database Installer will run again to install the **Sample Company Database**. You will be prompted to backup the database (screen shot above). The Sample Company database installation will begin with the screen shown in step a, above, then skips the **Install New or Migrate** screen shown in step c.
- i. Click **Finish** on the Database Installer screen to continue.

12 On Professional and Enterprise installations, the **Computer Name** screen is displayed once the Database Server install is complete.



Important: Record your computer name before clicking the **OK** button. You will need to enter the computer name when you install your Client Tools.

13 Next you will see a series of install screens for third party applications, such as Crystal Reports. You do not need to do anything on these screens. If you are installing the Web Module, the following screen appears:

Make a note of the MobileAsset Web Module URL.



14 After MobileAsset installs, the WaspLabeler installation screen will appear. WaspLabeler installs to allow you to view and edit labels that are included in your MobileAsset system and to create new labels.

Note: If you are upgrading the WaspLabeler program, select **Repair**, then **Next**.

15 You can select a new destination by clicking the **Browse** button and navigating to a new folder, or accept the default location by clicking the **Next** button.

16 A series of progress screens will appear as Labeler is installing.

17 After the entire installation process is complete, a screen will appear asking if you want to reboot your computer. Select **Yes**, I want to restart my computer now, remove any installation disks from their drives, then click **Finish**. Your system will reboot.

MobileAsset and Wasp Labeler icons will appear on your desktop.

Migrating an Existing Database

Note: You should complete steps 1 through 4 below prior to beginning the MobileAsset installation.

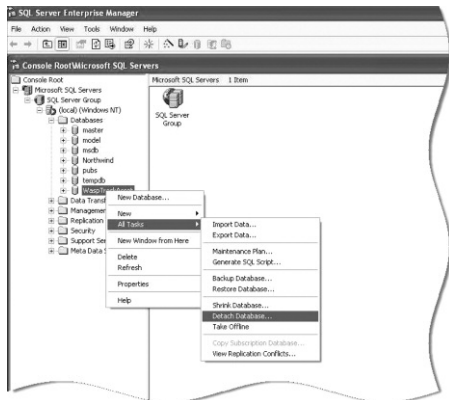
Migrating is the process of moving the database server machine. If you had MobileAsset's database installed on machine A but now want the database to be on machine B, the installer will facilitate the movement of that database to the new machine. Migrating should not be used if you are upgrading one machine. Only use migration if you are moving the location where database is installed.

The steps below outline migration of a MobileAsset v5.x or v6.x database

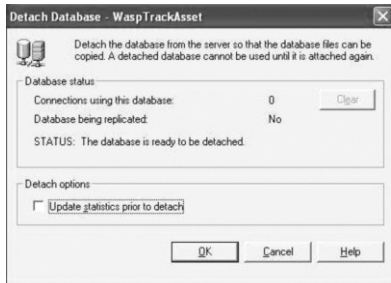
to a new machine. If you are migrating a v4.x database, you will need to call technical support.

Create and store a current backup of MobileAsset before beginning these steps.

- 1 To migrate an existing database, you will need to detach the database from its existing location. To do this, open SQL Server Manager and navigate to the database. Right click on the database and select **All Tasks > Detach Database**.



- 2 The **Detach Database** screen appears:



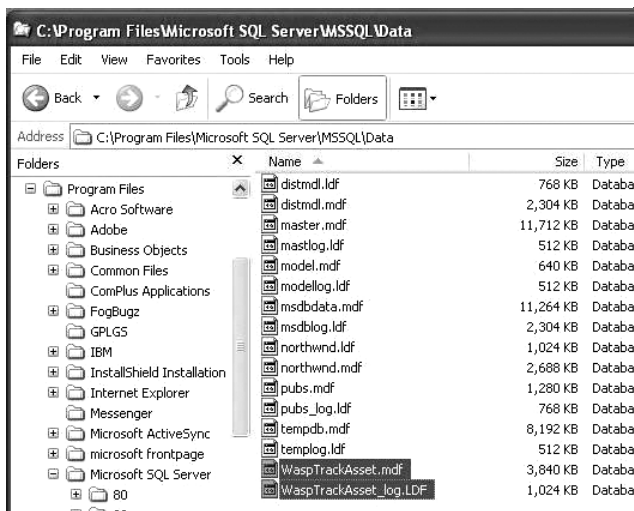
Click the **OK** button.

- 3 When the database has successfully detached, the following message appears:

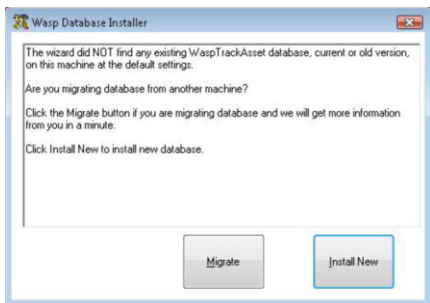


Click the **OK** button. WaspTrackAsset will disappear from the database list.

- 4 Next, move the associated .mdf and .ldf files from SQL Server to a location on your local machine (or on the machine where you will be migrating the database).



- 5 During the database installation portion of the MobileAsset installation, you will see the following screen:



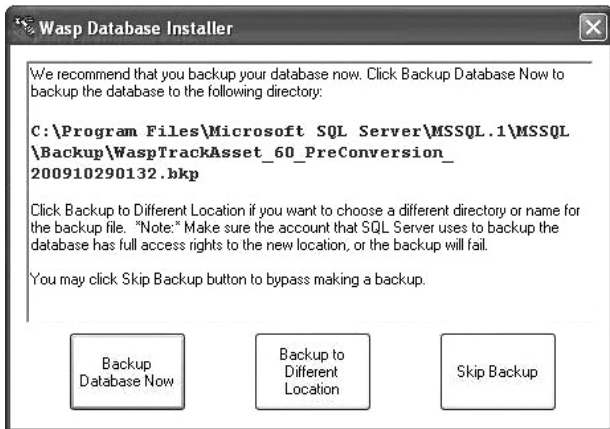
Click **Migrate** to complete migrating your database.

- 6 A screen will appear asking for the location of the mdf and ldf files:



Navigate to the location where you moved the files, then click the **OK** button.

- 7 Next a screen appears asking you to backup your database.



Click **Backup Database Now** to accept the default backup location, or click **Backup to Different Location** to select a custom directory or name for your backup file. If you want to create the backup later, click **Skip Backup**.

- 8 Click the **Finish** button to close the Wasp Database Installer.

SET UP YOUR DATABASE

Now that your software is installed, you will want to take a few minutes to properly enter information into your database.

For detailed information on any of the procedures listed in this document, please refer to MobileAsset's online help system. You can access the online help by clicking **Help > Contents** from the toolbar or by selecting the **Help** button on any screen.

Below is a brief outline of the steps required to set up your database. **These steps should be done in order.** The steps below discuss manually entering information into your database; however, much of this data can be imported. Importing data is discussed in this document in the section titled **Methods of Data Entry (Importing vs. Manual Entry)**. Even if you are planning on importing your information, we recommend that you review the steps below to help you understand how the different types of data interrelate.

If you have installed the MobileAsset Web Module, you can complete most of your database setup on the Web. You will need to enter your Groups/Users and Company Information on the PC application, then you can complete the database setup on the Web Module. For more information on getting started using the MobileAsset Web Module, please refer to the section titled MobileAsset Web Setup on page 21.

1 First, open the MobileAsset application by double-clicking on the icon on your desktop. You can also access MobileAsset from the Start menu by selecting **Programs>Wasp Technologies>MobileAsset**.

The **Login** screen will appear. The first time you access the system, Admin will appear in the **User Name** field. You do not need to enter a password. Click the **OK** button to launch the software.

2 Create at least one additional user with Administration privileges. By default, MobileAsset contains one Admin user profile. You will want to create at least one more so that if one becomes disabled you can still access the system.

3 Enter your company information. From the **Main** menu, select the **Administration** icon, then click **Company Information**. All fields on the company information screen are optional.

4 Enter all sites for your company. From the **Main** menu, select the **New** icon, then click **Site**.

A site is a major classification for areas that contain assets within your company. For instance, if you have two warehouses, you might set up MobileAsset to have two sites: Warehouse 1 and Warehouse 2.

You must enter at least one site before you can add assets to your system.

5 Now you can enter the locations contained in each of your sites. From the **Main** menu, select the **New** icon, then click **Location**. Assets that you enter into your system must each be assigned to a site and a location within that site. Using the example above, within Warehouse 1, you might have three locations: Main Storage Area, Manager's Office and Administrative Office.

6 This step is optional. You can create departments for your company. This may help you with assigning the assets. For instance, within your locations, you may want to designate two departments. Continuing the example above, within the Administrative Office, you could have two departments: Accounting and Human Resources. This is a further classification to help you track your assets.

To set up departments, from the **Main** menu, select the **New** icon, then click **Departments**.

7 This step is optional. You can enter all manufacturers for your assets. From the **Main** menu, select the **New** icon, then click **Manufacturers**. Manufacturers can later be assigned to Asset Types (see step 9).

8 If you will be calculating depreciation on your assets, set up your Depreciation Classes next. These are created to determine a specific Depreciation Method (straight-line, double declining, etc.) for an Asset type (see step 9). The Asset Types are then assigned to specific assets and the depreciation class tied to the asset type is used to calculate depreciation.

To create Depreciation Classes, from the **Main** menu, click the **New** icon, then select **Depreciation Classes**.

9 Now you need to create your asset types. Asset types are required because each asset in your inventory is assigned to an asset type. The asset type is a category or classification for assets. For instance, you may have an asset type of IBM Laptop X6000 that defines the manufacturer, size specs, etc. of this particular type of computer. Then specific computers of the same type are assigned as assets to the IBM Laptop X6000 asset type.

To create Asset Types, from the **Main** menu, select the **New** icon, then click **Asset Types**.

10 This step is optional. You can create different categories to which you can assign assets. This is another way to further define your assets. You can add categories directly from the **New Asset Type** screen, if you wish.

Now you are ready to begin entering individual assets. From the **Main** menu, click the **New** icon, then click **Assets**.

Methods of Data Entry (Importing vs. Manual Entry):

There are two ways you can add information to your database: through manual entry or by importing the data from an existing database. Importing data can be much quicker if you wish to transfer a large amount of information from an existing database to MobileAsset. Importing this information also ensures you do not have typographical errors.

You must import the data in a set order. *Detailed instructions for importing data can be found in the online help.* The outline below details the order in which data must be imported into the system. For a more detailed explanation and outline, please refer to the Import Strategies topic in the online help. MobileAsset will only accept the data in this specific order because each piece of information builds on the next to create a complete profile for your assets. For instance, each asset must be assigned to a specific location, therefore, you must import your locations first so that MobileAsset will have this information prior to

importing your assets. Again, we strongly recommend that you review the information regarding importing data in the online help before you begin the import process.

Import Order:

- A. Vendors (optional)
- B. Manufacturers (optional)
- C. Depreciation Classes
(optional – import if you will be calculating depreciation.)
- D. Asset Types (required)
- E. Departments (optional – if you will be importing employees and wish to assign them to specific departments, you must import the departments prior to importing the employees. If you wish to assign Assets to specific departments, but not employees, you can import departments anytime before importing assets.)
- F. Site (required)
- G. Locations (required)
- H. Assets (required)
- I. Employees (optional – import if you will be checking out/in assets to employees)
- J. Customers (optional - import if you will be checking out/in assets to customers)

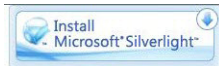
If you plan on importing information, you should also keep in mind that some types of supplemental information cannot be imported. For instance, if you wish to assign Asset Types to specific Categories, you will need to manually create these from the New Asset Type screen.

Imported data must be in .csv format. For further information, including examples of properly formatted .csv files, please refer to the Import Strategies topic in the online help.

MobileAsset Web Module Setup

The MobileAsset Web Module combines the asset tracking tools found in the PC version with the accessibility and convenience of a web-based application. The web module utilizes the same database your PC version does, so if you make changes to your assets on the PC, your users will see those changes in the Web Module, and vice-versa. While the Web Module is ready to use right after installation, there are a few things to keep in mind as you get started.

Accessing the Web Module – After installation you should be able to access the web module by typing `http://<webservername>:8082/`. If you do not have Microsoft Silverlight installed, you may see a screen similar to the one below, prompting you to install it.



Follow the onscreen prompts to install Microsoft Silverlight. You will need to close and reopen your browser. Silverlight will need to be installed on each client machine that will be accessing the MobileAsset Web Module. You will need Local Admin rights to each machine in order to install Silverlight. Your IT department may be able to perform this installation for you through update services.

Setting Your Internet Options for Maximum Performance - After you open MobileAsset in your web browser, you should take a few minutes to make sure your Internet options are set to allow maximum performance. It is a good idea to perform the following steps prior to using the web module:

- **Add MobileAsset to your list of “Safe Sites”** – To do this, in your browser go to **Tools > Internet Options > Security > Local Intranet > Sites**. Add the web address of your MobileAsset Web Module.

- **Check the User Authentication settings on your browser** – If your company will be using Windows NT Authentication (see the Security section, below) to log users onto the web module, you can prevent them from seeing the Windows Network Login screen each time they login. Go to **Tools > Internet Options > Security > Location Intranet > Custom levels**. The **Security Settings** screen appears. On the **Security Settings** screen scroll to the bottom. In the **User Authentication** section, make sure **Automatic Logon with Current User Name and Password** is selected. When this option is selected, and your groups/users in the MobileAsset PC application match those in your Microsoft Active Directory, users are automatically logged into the MobileAsset Web Module without having to enter their network login/password.
- **Check your Active X settings** – The Active X components are used for printing reports from MobileAsset. Make sure all Active X components are set to **Enable** or **Prompt**. These are found under **Tools > Internet Options > Security > Local Intranet > Custom levels**.
- **Make sure popups are set to open in a new window or tab** – On the **Internet Options** screen – **General** tab, click on **Tabs-Settings**. On the **Tabbed Browsing Settings** screen make sure the options **Always open popups in a new window or tab** is selected.
- **Set your Popup Blocker to Always Allow Popups From This Site** – If you have the popup blocker turned on, the first time you use the web module you may see a message that a popup window has been blocked. Select **Always Allow Popups From This Site** to prevent this from happening.

For more detailed instructions, with screen shots, on completing the steps above, or if you have problems printing from MobileAsset, please see the Troubleshooting section found in the MobileAsset Online Help. To access the online help, open the web module and click **Help** from any screen.

Security – Groups and users are set up in the MobileAsset PC application. If you need to make corrections/additions to your users or groups, you will need to do so on the PC. There are two ways you can set up users in the MobileAsset PC application to have access to the MobileAsset Web Module:

1. Manually Enter Users: Create groups and users using the MobileAsset PC application.

2. Let MobileAsset Automatically Create User Profiles Using Windows NT Authentication: If you are using Windows NT Authentication, you can set up a group in MobileAsset that matches your group name in the Microsoft Active Directory. When users in this group access MobileAsset for the first time their User account will be automatically created and added to the Manage Users screen in MobileAsset (PC application).

Example: You have a group in your Active Directory named My Users and you want everyone in My Users to have access to the MobileAsset Web Module. Create a group with the name My Users in MobileAsset using the MobileAsset PC application. Now when each member of the Group My Users accesses MobileAsset, they will receive the usual Windows Network Login Screen. They should enter their normal network user name and password. MobileAsset will recognize the Active Directory group's name as matching the MobileAsset group name and automatically create a user account for that user. You can then view those user accounts in MobileAsset (Security > Manage Users). Keep in mind that if you change the password on the user's MobileAsset user's account, they will receive the regular login screen and must enter the new password, rather than their network password.

Getting Additional Help – If you need assistance setting up the MobileAsset Web Module, you can refer to the Troubleshooting section in the online help, or you can check the Troubleshooting the MobileAsset Web Module page at the support site. The online troubleshooting page is an update repository of tips for getting the most out of your web application.

STEP 3

PRINT ASSET TAGS

Asset tags should be printed and attached to each asset in your database. When you created your assets, remember that you entered a number or code for each asset in the Asset Tag field of the New Asset screen (if you manually entered your assets) or in the Asset Tag column (if you imported the data). Now an actual tag should be printed that contains the Asset Tag number or code and (usually) a barcode for quick identification and tracking. These tags should be affixed to each asset.

MobileAsset came bundled with the WaspLabeler application making the creation of these asset tags simple. WaspLabeler was installed when you installed MobileAsset. To print tags, first select the assets from the Asset List for which you want to print tags, then click the Print Tags icon on the Asset List toolbar. You can select multiple assets using the SHIFT or ALT keys.

STEP 4

AUDIT YOUR ASSETS

Note: Test your mobile device to make sure data travels back and forth correctly before starting to do actual work on the device.

Now that your database is set up and you have attached asset tags to all assets, you should audit your assets. This ensures you have not missed an asset, mis-labeled an asset, or assigned an asset to the wrong location. The quickest way to do this is to use your mobile device. You will need to set up your mobile device prior to performing this step. Please refer to the Working With Mobile Devices section of your online help system for assistance setting up, using and syncing your mobile devices.

Synchronize the data you have collected on your mobile device back to the PC.

If you have chosen not to install a mobile device, you will need to do this audit manually, by physically checking each asset tag attached to an asset and comparing against the database.

STEP 5

BEGIN MANAGING YOUR ASSETS

You have now successfully set up MobileAsset. You can now use MobileAsset's powerful tools, including detailed reports, check-in/out features and list views to quickly keep track of and manage your assets.

FOR PROFESSIONAL EDITION INSTALLATION

MobileAsset Pro Edition takes advantage of your existing TCP/IP network to allow up to five MobileAsset client workstations access to a single database located at the MobileAsset server. The client software may optionally be installed on the same machine where the MobileAsset server database is installed.

STEP 2

Installation

MobileAsset Pro ships with one server license and five client licenses. MobileAsset Pro Edition may be installed in your choice of these two configurations.

Refer to the diagrams and hardware requirements below to decide how you will deploy the licenses in your environment.

Minimum Server Configuration	Recommended Server Configuration
800 MHz CPU	1.0+ GHz CPU
512 MB of RAM	1 GB of RAM
200 MB of disk space with 700 MB of free space available after install	200 MB of disk space with >1.0 GB of free space available after install
DVD drive (for installation only)	
Microsoft® Windows XPSP3, Vista, Windows 7, Server 2003 or Server 2008, 32 or 64 bit compatible	

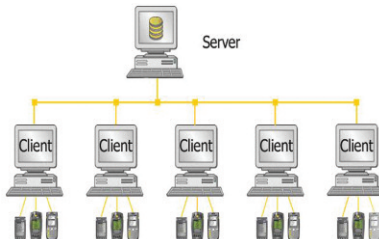
Minimum Client Configuration	Recommended Client Configuration
800 MHz CPU	1.0+ GHz CPU
512 MB of RAM	1 GB of RAM
200 MB of disk space with 700 MB of free space available after install	200 MB of disk space with >1.0 GB of free space available after install
DVD drive (for installation only)	
1024 x 768 pixel display with 16 bit high color or better	
Microsoft® Windows XPSP3, Vista, Windows 7, Server 2003 or Server 2008, 32 or 64 bit compatible	

NOTE:

- MobileAsset server installation on Microsoft® Windows® 2000, 98SE, NT or ME machines are not supported.
- MobileAsset clients will not work without connecting to a running MobileAsset server.
- The database server will run automatically every time the computer is rebooted.

1 Server and 5 Clients

When selecting the MobileAsset database server configuration shown below, uncheck the **Client Tools** option on the **Select Installation Type** screen, and only the database server will be installed on this machine.



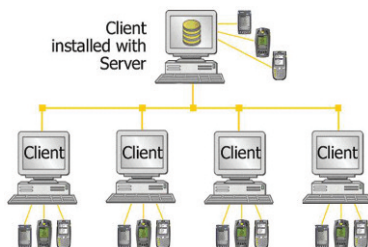
Select Installation Type screen:

In the Professional/Enterprise Edition, only one computer needs the Database installed. If you have already installed the Database on another computer, un-check the Database install.	
<input checked="" type="checkbox"/> Database <input type="checkbox"/> Client Tools <input type="checkbox"/> Database Manager	Description: Installs Microsoft SQL Server 2005 Express and other components to run the database. It also installs the Wasp Database for the asset product.

* For the client-only machine, refer to the **Client Only** section below.

2 Server with Client and 4 Clients

When selecting the MobileAsset database server configuration shown below, leave the check in the **Client Tools** option and the **Database** option. The database server and one client will be installed on this machine.



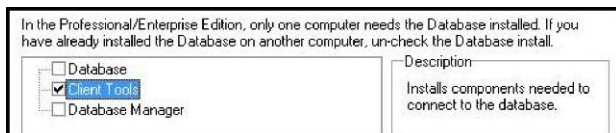
In the Professional/Enterprise Edition, only one computer needs the Database installed. If you have already installed the Database on another computer, un-check the Database install.	
<input checked="" type="checkbox"/> Database <input checked="" type="checkbox"/> Client Tools <input type="checkbox"/> Database Manager	Description: Installs Microsoft SQL Server 2005 Express and other components to run the database. It also installs the Wasp Database for the asset product.

Remember that there are only five client licenses, so you might want to deselect the **Client Tools** component if you would rather deploy all of your client licenses on machines other than this database server machine. If you deselect **Database** here, you will not be installing the server.

✳ Client Only

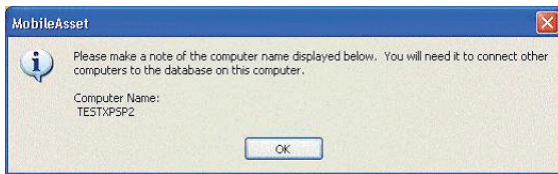
The **Client Tools** component of MobileAsset Pro Edition can be installed once a MobileAsset server has been installed and is running.

Deselect the **Database (Server)** component when the **Select Installation Type** screen is presented, and click the **Next** button to install only the **Client Tools** component at machines other than the database server machine.



Note: For information regarding the Database Manager option, please refer to the section **Using MobileAsset to Manage Assets for Multiple Companies** on page 32.

The **Computer Name** screen is displayed once the database server install is complete.



Important:

Record your **Computer Name** before clicking the **OK** button. This name must be known when you perform your Client Tools installation.

USING THE MOBILEASSET CLIENTS

The client licenses are “Fixed”. After you install a client license and run that client, it will connect to the server and register itself with the server.

Information about that computer will be stored on the server. Any authorized user can connect from that computer using that one license. If five clients have been installed and registered with the server and a sixth client is installed, when that sixth client runs it will fail to connect because all licenses have been used. Even if none of the other clients are running the application, the sixth machine will be denied a license.

Functions you perform at any MobileAsset PC client machine will impact other users at one of three possible levels, as illustrated in the following table:

Function Performed on a Client	Affects All Users, Everywhere	Affects Any User Who Logs On to this Client	Affects Only a Specific User
Change Company Information	X		
Restore the database	X		
Add or change Security Privileges	X		
Import Data	X		
Edit Field Names	X		
Set Default Working Site		X	
Change any Option	X		
All Asset Management functions	X		
Change Labeler Labels		X	
Change Report Filters	X		
Mobile Device Database Filter Criteria			X

See the MobileAsset Online Help for more information about Synchronization, Processing Mobile Device Data and the Create PDA (or Windows Mobile/CE) Database functions.

CONNECTING A MOBILE DEVICE

One or more compatible mobile devices may be connected anywhere the MobileAsset Client Tools are installed (up to the maximum number of mobile licenses purchased). Use the Quick Start Guide with the device to set up the hardware. See the MobileAsset Help topics for information about performing mobile transactions.

FOR ENTERPRISE EDITION INSTALLATION

MobileAsset Enterprise Edition takes advantage of your existing TCP/IP network and your current installation of MS SQL Server to allow an unlimited number of client workstations to access the MobileAsset database. The client software may optionally be installed on the same machine where the database is installed.

INSTALLATION

MobileAsset Enterprise ships with one server license and the ability to connect an unlimited number of clients connections:



Refer to the diagram above and the hardware requirements below to decide how you will deploy MobileAsset Enterprise in your environment.

Minimum Server Configuration	Recommended Server Configuration
800 MHz CPU	1.0+ GHz CPU
512 MB of RAM	1 GB of RAM
200 MB of disk space with 700 MB of free space available after install	200 Mb of disk space with >1.0 GB of free space available after install
DVD-ROM drive (for installation only)	
Microsoft® Windows XPSP3, Vista, Windows 7, Server 2003 or Server 2008, 32 or 64 bit compatible	

Minimum Client Configuration	Recommended Client Configuration
800 MHz CPU	1.0+ GHz CPU
512 MB of RAM	1 GB of RAM
200 MB of disk space with 700 MB of free space available after install	200 MB of disk space with >1.0 GB of free space available after install
DVD drive (for installation only)	
1024 x 768 pixel display with 16 bit high color or better	
Microsoft® Windows XPSP3, Vista, Windows 7, Server 2003 or Server 2008, 32 or 64 bit compatible	

NOTE:

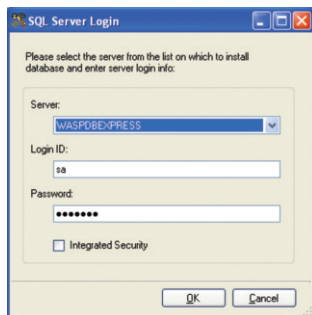
- MobileAsset server installation on Microsoft® Windows® 2000, 98SE, NT or ME machines are not supported.
- MobileAsset clients will not work without connecting to a running MobileAsset server.
- The database server will run automatically every time the computer is rebooted.

Server Installation Procedures:

NOTE: Please ensure that the Database Administrator performs the following procedures.

1 Place the CD into the CD ROM drive on the server that already has **Microsoft SQL Server 2005/2008 Full Version** installed. Run the installer as usual. When prompted to select an **Installation Type**, select **Database** only.

2



If you have more than one database instance installed, they will be listed under the server.

NOTE: The **Integrated Security** check box is used to specify that the SQL Server Wire Protocol driver request a secure (or trusted) connection to SQL Server. SQL Server uses integrated login security to establish connections using this data source, regardless of the current login security mode at the server. Any login ID or password supplied is ignored. The SQL Server system administrator must have associated your Windows network ID with a SQL Server login ID.

When the **Integrated Security** check box is not checked you must specify that SQL Server use standard login security to establish connections using this data source. You must specify a **Login ID** and **Password** for all connection requests.

Make sure that you select the correct database instance in the server list to install MobileAsset database.

3 Click **OK**.

4 The same Wasp Database Installer windows will appear that display in step 10 of the **Install the Software** section of this document (page 9).

Note: For information regarding the Database Manager feature, please refer to the section **Using MobileAsset to Manage Assets for Multiple Companies** on page 34.

If the database has been previously installed, the installer will upgrade the database to the latest layout.

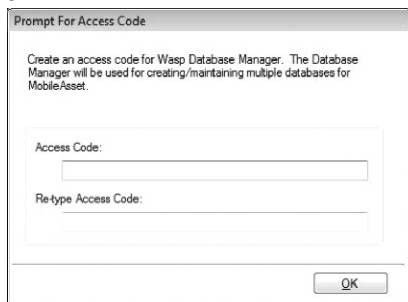
Now the server database installation is complete. If you have Microsoft SQL Enterprise Manager, you will see that WaspTrackAsset (for MobileAsset) has been installed under the **Server** and the **Instance** (if applicable) that you specified.

UPGRADING FROM MOBILEASSET ENTERPRISE VERSION 5 TO VERSION 6

- 1 The MobileAsset Installer should be run on each client machine to upgrade the software.
- 2 On the database server machine that houses your database, you should run the installer as usual. On the **Select Installation Type** screen, select **Database** only.

If the machine that houses your database also contains a client program, you will need to perform Step 1 and Step 2 on that machine.

Note on Running Scripts Manually: If you run the scripts manually to install the database and you need multiple company access, the access code for the Database Manager will not be set the first time you run the Database Manager. To correct this, you must run the Database Manager at least once to create the access code rather than leaving it blank. You will be presented with the same Create Access Code screen that would have appeared during a normal install:



Prompt For Access Code

Create an access code for Wasp Database Manager. The Database Manager will be used for creating/maintaining multiple databases for MobileAsset.

Access Code:

Re-type Access Code:

OK

Leaving the access code blank may lower your database security level and put your information in greater danger of being compromised.

USING MOBILEASSET TO MANAGE ASSETS FOR MULTIPLE COMPANIES

The Enterprise version of MobileAsset allows you to create databases for multiple companies. This means that if you have two separate entities for which you want to maintain assets, you can install one instance of MobileAsset, then create two databases - one for each company. Remember that a database is the repository for all information about your company. Everything from your company's name and address, to employee and asset information is stored in the database. If you need to track asset information for two separate companies, you wouldn't want to group that information into one database, as it would be impossible to know to which company the asset belongs. Creating a database for each company allows you to enter sites, locations, customers, employees, assets, etc. that are specific to one company. In addition, each company has its own security, so you can control who has access to a specific company.

The initial installation of MobileAsset creates one company for you to use. To add more companies, you will need to use the Database Manager. The Database Manager is a program that can be installed during the MobileAsset installation. If you did not install it when you installed MobileAsset, you will need to run the MobileAsset installer again and select **Database Manager** on the **Select Installation Type** screen (Step 7 in the Install the Software section of this document). Leave the other check boxes on this screen checked as they were for the initial install. During the installation, you will be prompted to create an access code. Make a note of the code you create, as you will need this to access the Database Manager later. The Database Manager can be installed on any machine, even if it has no other pieces of MobileAsset installed on it. It does not consume a license if it is installed on a machine that does not have the client on it.

To run the Database Manager, click **Start > All Programs > Wasp > MobileAsset > Database Manager**. Again, you will need to know the access code you created during the installation to run the Database Manager. Use the Online Help built into the Database Manager to learn how to add and manage database (click the Help button or press F1 on your keyboard when the Database Manager is running).

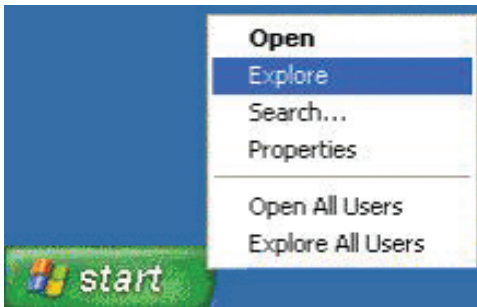
After multiple company databases are created using the Database Manager, you can use the same MobileAsset icon that was created during installation, or the MobileAsset Web Module, to access any of the companies. Double click on the icon and enter your login name and password. If the entered login and password match a login and password set up in more than one company database, a screen will appear allowing you to select which company you want to access.

CONNECTING A MOBILE DEVICE

One or more compatible mobile devices may be connected anywhere the MobileAsset Client tools are installed (up to the maximum number of Mobile Licenses purchased). Use the Quick Start Guide with the device to set up the hardware. See the MobileAsset Help topics for information about performing mobile transactions.

MANUAL START PROCEDURES

- 1 Place the CD into the CD ROM drive on your computer.
- 2 Right mouse click on the **Start** icon and click the **Explore** option.



- 3 Click on the disk drive location containing your Installation CD to expose the CD contents.
- 4 Locate the **setup.exe** program and double click on it. The installation process will begin.



Wasp® Barcode Technologies
1400 10th Street, Plano, Texas 75074
Tel: 214.547.4100 • Fax: 214.547.4101
www.waspbarcode.com